



# 2022 TBR Published Data

Hankook Tire & Technology





**Products**



# Tire Naming Rule

About Us

Market Trends

Products

Tire Management  
Systems

Distribution  
Systems



## Naming Rule

**e-cube<sup>Blue</sup> AL20**

PRODUCT BRAND

Position

Operating  
Conditions

Serial No.



Position

**A**

All Position

**D**

Drive Position

**T**

Trailer Position



Long Distance

**AL**

**DL**

**TL**



Mid-long Distance

**AH**

**DH**

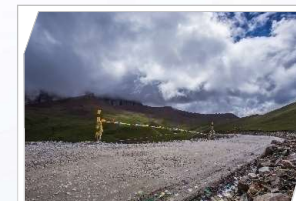
**TH**



Urban

**AU**

**DU**



Unpaved Road

**AM**

**DM**

\*Special instructions for tires used in designated positions

# Tire Naming Rule

About Us Market Trends

Products

Tire Management  
Systems

Distribution  
Systems



**L** Long Distance



Long distance driving on highways and smooth-riding roads, striving to achieve longer journeys.



**H** Mid-long Distance



Mid-long distance driving on highways, national highways, and ordinary highways, with a long driving life.



**U** Urban



City buses, driving in urban areas.



**M** Unpaved Road

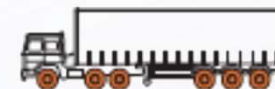


Driving on unpaved roads such as industrial, mining, and construction sites.

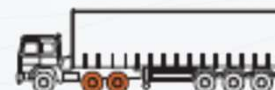


Mounting Position

All Position



Drive Position



Trailer Position



# Positioning Map of Main Operating Products

About Us

Market Trends

Products

Tire Management  
Systems

Distribution  
Systems



Product  
Positioning Map



Long  
Distance



AH30



AH33



AL22



AL26



DH81+



AH35



DL10



AU05



AU06



TH31



TH22



TL20

Poor Road Conditions



DM80D



AM81



AM09

Short  
Distance

Good Road Conditions



# Positioning Map of Main Operating Products

About Us Market Trends

Products

Tire Management Systems

Distribution Systems



Specification Range

Tube

16"

- 750R16
- 825R16

20"

- 750R20
- 825R20
- 900R20
- 1000R20
- 1100R20
- 1200R20

Tubeless

17.5"

- 8.5R17.5
- 9.5R17.5
- 205/75R17.5
- 215/75R17.5
- 235/75R17.5
- 245/70R17.5

19.5"

- 225/70R19.5
- 245/70R19.5
- 265/70R19.5
- 445/45R19.5

22.5"

- 8R22.5
- 9R22.5
- 10R22.5
- 11R22.5
- 12R22.5
- 13R22.5
- 255/70R22.5
- 275/70R22.5
- 275/80R22.5
- 295/60R22.5
- 295/75R22.5
- 295/80R22.5
- 305/70R22.5
- 315/60R22.5
- 315/70R22.5
- 315/80R22.5
- 385/55R22.5
- 385/65R22.5
- 425/65R22.5

# DL10/DL10+ e-cube



About Us Market Trends

Products

Tire Management  
Systems

Distribution  
Systems



- DL10 is an energy-saving, economical, and environment-friendly product developed by Hankook for long-distance transportation, used in drive position;
- Pattern structure design of reinforced tread, maintaining good driving force, and preventing irregular wear of tire shoulders.



● Suitable ● Able



## Introduction

- Long distance, used in drive position
- Energy-saving x economical x environment-friendly
- Special rubber formula for long-distance high-speed driving
- Balancing long-distance driving performance and driving power



## Operating Specifications

Specifications	Level
295/80R22.5	18
315/80R22.5	18



Design Features • Wear resistance

• Durability

• Long mileage



# AH31 SMaRT FLeX



About Us Market Trends

Products

Tire Management Systems

Distribution Systems



- AH31 is a product developed by Hankook for middle and long distances, suitable for guide wheel and used in all position;
- The application of 3D pattern incision design provides good traction performance, improves driving mileage and reduces irregular wear, thus earning the iF Design Award.



## Introduction

- Mid-long distance, suitable for guide wheel and used in all position
- Application of new 3D incision technology, improving traction performance and preventing eccentric wear
- New rubber formula and pattern design, excellent performance and cost advantages



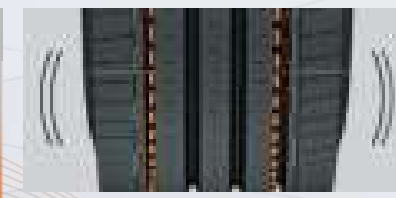
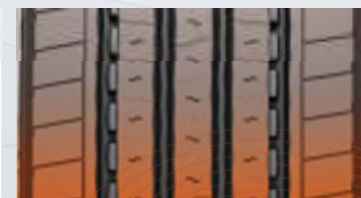
## Operating Specifications

Specifications	Level
11R22.5	16
12R22.5	16
275/70R22.5	16
275/80R22.5	16
295/80R22.5	18
315/60R22.5	16
315/70R22.5	20
385/55R22.5	18
385/65R22.5	24



Design Features • Traction performance • Stability

• Long mileage & wear resistance







● Suitable ● Able





Comparison of Basic Product Information

- Hankook selected three products for performance analysis and vehicle field test;
- HK products have average pattern depth and weight, and there is no significant difference between products over other basic information.

Brand		Hankook	A	B	C
Pattern		AH31	A***	B***	C***
Image					
Specifications		12R22.5	12R22.5	12R22.5	12R22.5
Level		18	18	18	18
Size Information	Outer Diameter (mm)	1086	1085	1087	1085
	Section Width (mm)	296	296.5	298	303.4
	Tread Width (mm)	222	234	231	235
	Pattern Depth (mm)	16	16.3	15.7	16
	Weight (kg)	61.4	62.6	62.8	63.6
Load (kg)	Single Tire (kg)	3550	3550	3550	3550
	Double Tire (kg)	3250	3250	3250	3250
Load Index/Speed Level		152/149L	152/149L	152/149L	152/149L

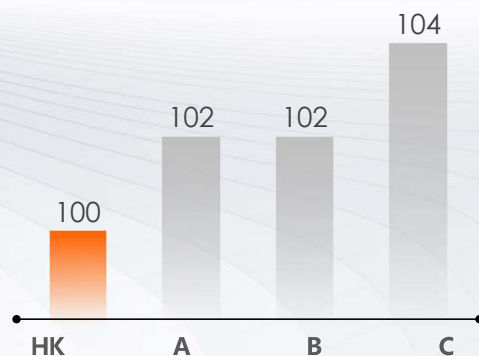


## Product Performance Comparison Results

- In terms of weight, HK AH31 is a low fuel consumption product compared to its competitors' lightweight products;
- Compared to competitors, the wear resistance index of Hankook has improved by an average of **5%**, and the rolling index has reached 5.5, making it more **fuel-efficient** and improve fuel consumption by **3-6%**.

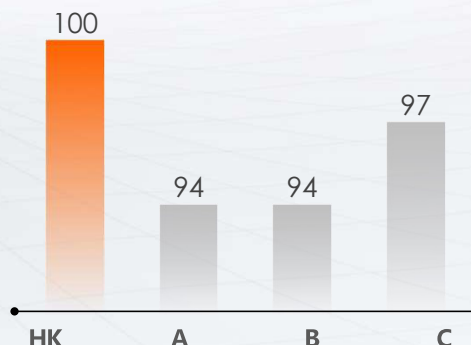
### Weight Index

HK weight is at average level



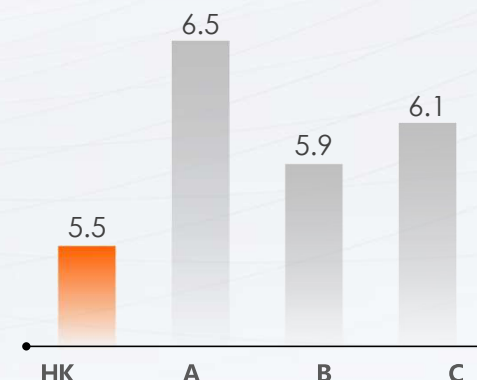
### Wear Resistance Index (Mileage)

HK is 5% higher than competitors



### Rolling Index

HK rolling index is 5.5, fuel consumption improved by 3-6%



\*The wear resistance index book calculates the theoretical mileage index based on the tire structure and formula; the rolling index is an important indicator that affects fuel consumption, and the smaller the value, the more fuel-efficient it is. For every 10% improvement, the fuel saving effect is improved by about 3%.

\*All tests on the above pages have been conducted internally by Hankook, using specific testing tools and standards in specific environments to obtain results. Due to the influence of various factors such as vehicles, operating environments, and drivers on the effectiveness of tire use, the test results do not necessarily indicate that they are present under any operating conditions and environment. The test results are only for reference in explaining tire performance.

# TH31 SMaRT FLeX



About Us Market Trends

Products

Tire Management  
Systems

Distribution  
Systems



- TH31 is a trailer specific tire developed by Hankook for middle and long distances;
- Specially designed serrated pattern grooves provide excellent traction and drainage performance under various road conditions.



## Introduction

- Mid-long distance, dedicated for trailer position
- New tread pattern design, enhancing traction performance
- Special for trailer, improved tread formula, preventing chipping and irregular wear



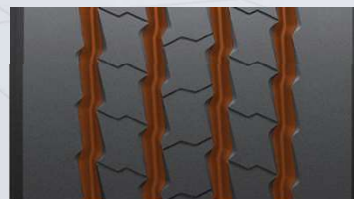
## Operating Specifications

Specifications	Level
12R22.5	12/16/18
275/70R22.5	16
295/60R22.5	18
385/55R22.5	18
385/65R22.5	18
425/65R22.5	20
445/45R19.5	22



## Design Features • Stability

- Formula improvement





● Suitable ● Able





## Comparison of Basic Product Information

- Hankook selected two products for performance analysis and vehicle field test;
- HK products have average pattern depth and weight, and there is no significant difference between products over other basic information.

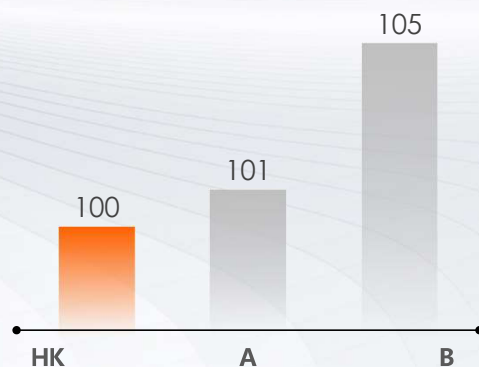
Brand		Hankook	A	B
Pattern		TH31	A***	B***
Image				
Specifications		12R22.5	12R22.5	12R22.5
Level		18	18	18
Size Information	Outer Diameter (mm)	1080	1075	1086
	Section Width (mm)	297.3	294.3	303.8
	Tread Width (mm)	216	218	218
	Pattern Depth (mm)	14.5	13.7	14.7
	Weight (kg)	57.1	57.8	60.0
Load (kg)	Single Tire (kg)	3550	3550	3550
	Double Tire (kg)	3250	3250	3250
Load Index/Speed Level		152/149L	152/149L	152/149L



## Product Performance Comparison Results

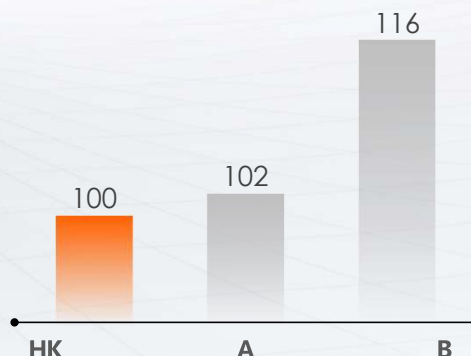
- In terms of weight, HK TH31 is a low fuel consumption product compared to its competitors' lightweight products;
- Compared to competitors, the rolling index has reached 5.1, making it more **fuel-efficient** and improve fuel consumption by **4-6%**.

### Weight Index



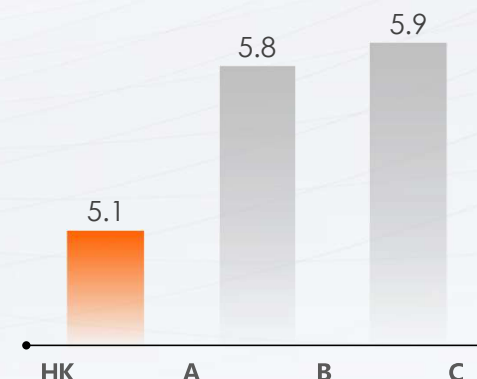
### Wear Resistance Index (Mileage)

HK is 3-6% higher than competitors



### Rolling Index

HK rolling index is 5.1, fuel consumption improved by 4-6%



\*The wear resistance index book calculates the theoretical mileage index based on the tire structure and formula; the rolling index is an important indicator that affects fuel consumption, and the smaller the value, the more fuel-efficient it is. For every 10% improvement, the fuel saving effect is improved by about 3%.

\*All tests on the above pages have been conducted internally by Hankook, using specific testing tools and standards in specific environments to obtain results. Due to the influence of various factors such as vehicles, operating environments, and drivers on the effectiveness of tire use, the test results do not necessarily indicate that they are present under any operating conditions and environment. The test results are only for reference in explaining tire performance.



## Comparison of Basic Product Information

- Hankook selected two products for performance analysis and vehicle field test;
- HK products have average pattern depth and weight, and there is no significant difference between products over other basic information.

Brand		Hankook	A	B
Pattern		TH31	A***	B***
Image				
Specifications		295/60R22.5	295/60R22.5	295/60R22.5
Level		18	18	18
Size Information	Outer Diameter (mm)	920	929	923
	Section Width (mm)	285	283.1	285.8
	Tread Width (mm)	244	225	245
	Pattern Depth (mm)	13.6	14.2	13.9
	Weight (kg)	46.7	45.8	47.9
Load (kg)	Single Tire (kg)	3350	3250	3250
	Double Tire (kg)	3075	3000	3000
Load Index/Speed Level		150/147K	149/146M	149/146K

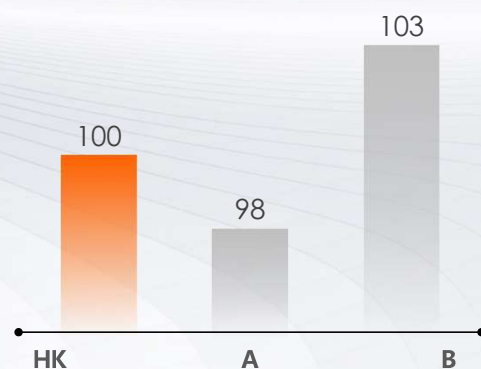




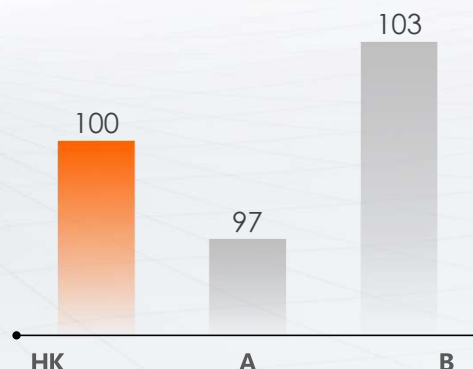
## Product Performance Comparison Results

- In terms of weight, HK TH31 is a low fuel consumption product compared to its competitors' lightweight products;
- Compared to competitors, the rolling index has reached 5.3, making it more **fuel-efficient** and improve fuel consumption by **4-6%**.

## Weight Index

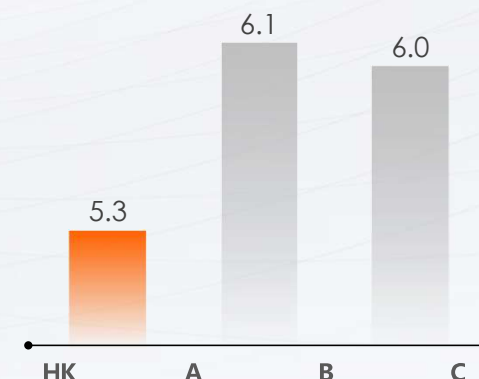


## Wear Resistance Index (Mileage)



## Rolling Index

HK rolling index is 5.3, fuel consumption improved by 4-6%



\*The wear resistance index book calculates the theoretical mileage index based on the tire structure and formula; the rolling index is an important indicator that affects fuel consumption, and the smaller the value, the more fuel-efficient it is. For every 10% improvement, the fuel saving effect is improved by about 3%.

\*All tests on the above pages have been conducted internally by Hankook, using specific testing tools and standards in specific environments to obtain results. Due to the influence of various factors such as vehicles, operating environments, and drivers on the effectiveness of tire use, the test results do not necessarily indicate that they are present under any operating conditions and environment. The test results are only for reference in explaining tire performance.

# DM80D



About Us Market Trends

Products

Tire Management  
Systems

Distribution  
Systems



- DM80D is a special drive wheel product designed by Hankook for middle and short distance hybrid roads;
- Tread formula for block falling resistance, deep groove horizontal pattern block design, strong driving force on hybrid roads.



● Suitable ● Able



## Introduction

- Middle and short distance hybrid roads, dedicated to driving wheels
- Special rubber formula for middle and short distance hybrid roads, with good wear resistance and cutting resistance
- Large horizontal pattern design, preventing stone inclusion and tread falling



## Operating Specifications

Specifications	Level
1000R20	16
1100R20	18
1200R20	20



## Design Features

- Block falling resistance
- Anti-pinch stone
- Durability





# AM81



About Us   Market Trends

Products

Tire Management  
Systems

Distribution  
Systems



- AM81 is a product designed by Hankook for middle and short distance hybrid roads, used in all position;
- The deep shoulder flange and asymmetric shoulder incision design enhance traction and grip performance, and improve heat dissipation and durability.



● Suitable   ● Able



## Introduction

- Middle and short distance hybrid roads, used in all position
- Durable structure design of tire body, improving the tire service life
- Increasing the spacing between pattern blocks to ensure pattern strength

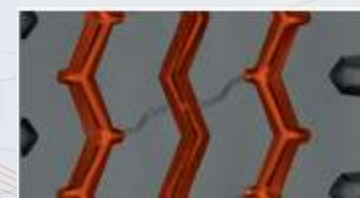


## Operating Specifications

Specifications	Level
900R20	16
1000R20	16
1100R20	16
1200R20	18




Design Features • Durability • Traction performance • Anti-pinch stone & traction performance





# Truck and Bus Tire Specification Table



Specifications		AH33	AH30	AH31	AH37	AH35	AL26	DL10(+)	TL20
16"	750R16		● (AH85+)						
	825R16		●						
20"	750R20		●						
	825R20		●						
	900R20		●						
	1000R20		●						
	1100R20	●	●						
17.5"	1200R20								
	8.5R17.5					●			
	9.5R17.5					●			
	205/75R17.5					●			
	215/75R17.5					●			
19.5"	235/75R17.5					●			
	245/70R17.5					●			
	225/70R19.5					●			
	245/70R19.5					●			
	265/70R19.5					●			
22.5"	285/70R19.5								
	445/45R19.5								
	8R22.5	●							
	9R22.5	●							
	10R22.5	●							
	11R22.5	●	●	●			●		
	12R22.5	●	●	●			●	●	
	13R22.5	●							
	255/70R22.5				●				
	275/70R22.5			●	●				
	275/80R22.5			●					
	295/60R22.5								
	295/75R22.5				●				
	295/80R22.5	●		●			●	●	
	305/70R22.5								
	315/60R22.5			●					
	315/70R22.5			●					
	315/80R22.5	●					●	●	
	385/55R22.5								●
	385/65R22.5			●					●
	425/65R22.5								
24.5"	11R24.5				●				



